



KOREA COMPUTER CENTER
SAMILPO INFORMATON CENTER

삼일포정보센터

SAMILPO INFORMATION CENTER



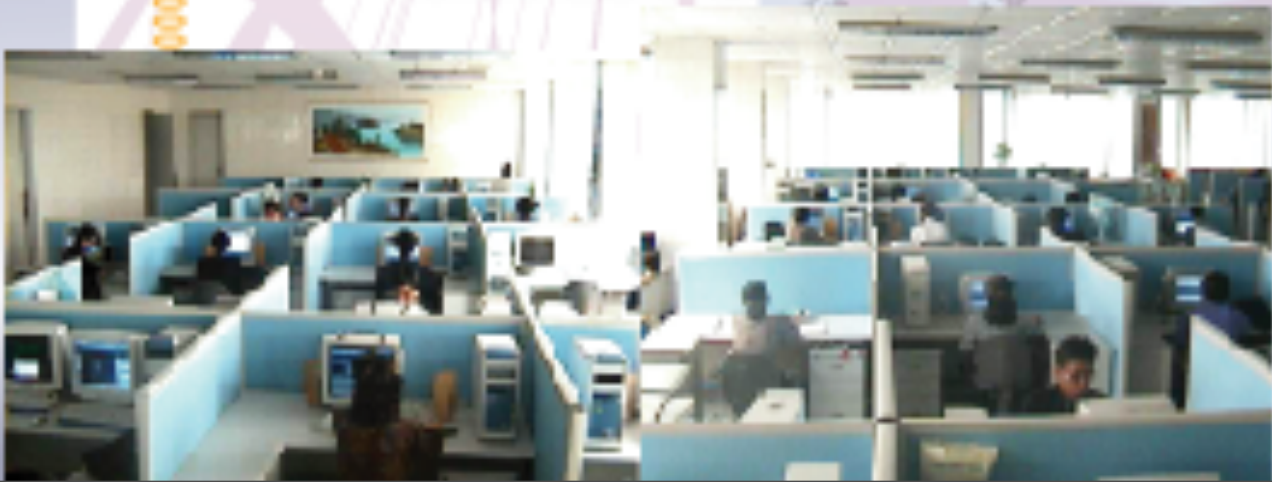


Research Field and Main Products

Samilpo Information Center has developed various kinds of application programs such as the world championships Computer Go Program “KCC Paduk”, Portable Digital Assistant (PDA) “Hana21”, Online Handwriting Recognition System “Koryo Pen”, Korean Chess, Japanese Chess Program, Multilingual Electronic Dictionary, ERP solution, Management System Packages, etc.

To meet the market’s demand, we develop programs operating in the various platforms for Linux, Windows, Mac, or for Embedded such as PDA.

All the software products we develop, based on the scientific development process and high-level know-how which has been accumulated for a long time, is trustworthy and meet the clients demand correctly.





Multimedia & 3D CG games.

Multimedia programs such as "TaeKwon-Do" and "Korean Stamps" are developed in a high-level and greatly contributed to the advancement of Multimedia program of our country. Now, we are pioneering the new path of Game program by combining artificial intelligence with 3D CG techniques.



◀ Multimedia program "Korean Stamps".

Here contained the whole record of 4,500 stamps published to the present in our country.



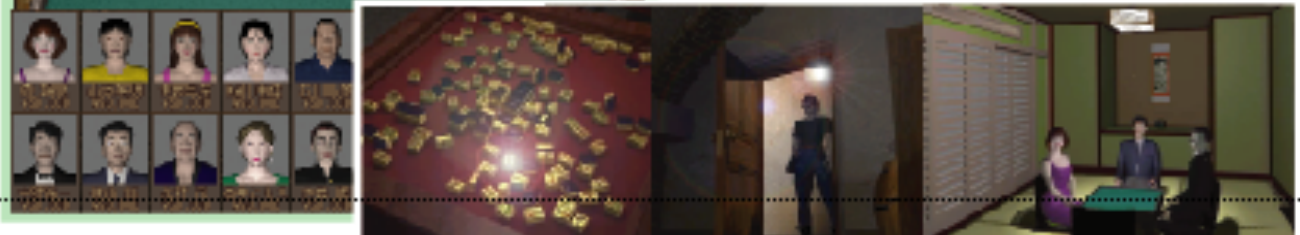
▶ Multimedia program "TaeKwon-Do".

This software enables training of TaeKwon-Do in Multimedia environment.



◀ Majang program "Tops Majang"

It is developed by combining AI technique with 3D CG technique. One can play the game with the other with his/her sensory.



2.REVERSE



Kind: board intelligence

Explanation: Reverse is well known game.

This game has strong engine, so you will be interesting. When you have more DOL than other, you win. On this game, 5 Characters appear as opponent and each one has unique skill. And this game has a function that human and human you can play this game with your friend.

You can save the game and restart the game whenever you want. You can also see the scores that you get or others get.

Interface:



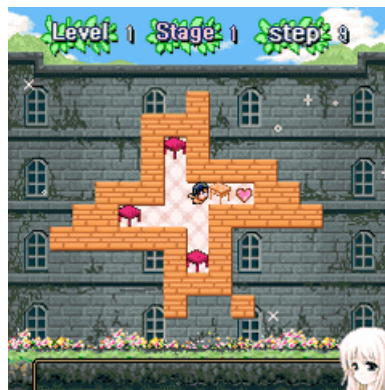
4.SOCOBAN



Kind: Puzzle

Explanation: Socoban is also well known game. On stage there are furnitures irregularly. You move the furnitures to the places that is marked. You can replace the furnitures that you misplaced. Each level has 10 stages.

Interface:



5.DEFEND BASE



Kind: Shooting

Explanation: This game is to shoot and destroy all enemies. all of the stage is destroyed you win. you can get various items that appear while you are playing. Item will update your weapon then you will be stronger.

If you get more coins your score will be more. The enemies' actions are different.

Interface:



6. Pearl Get



Kind: puzzel

Explanation: This game is to knock and break all diamonds on the board. Monsters will appear and disturb you. If you bump the monsters you will lose you're a life. You can attack monster with pushing the diamond

Explanation:



8.SUPER BUBBLE



Kind: Puzzel

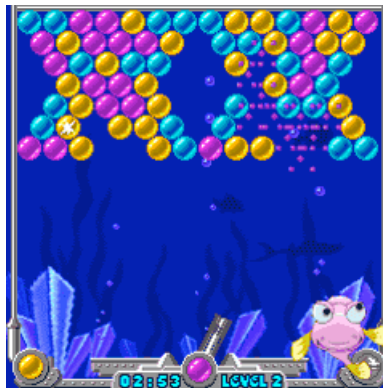
Explanation: This game is to shoot color bubbles that they are same color and linked more than 2.

The color of the bubble is on the gun should be same the color of the bubbles you aim at.

When you break all the bubbles on the stage you will face next stage.

Each level has 3stages.

Interface:



11.PANALT KICK



Kind: Sports

Explanation: 11m panat kick strain.

You can feel this impression as a player on the playground.

You can choose any country you want.

Interface:



14.WOLF HUNTING

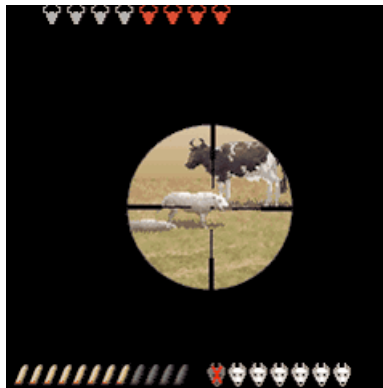


Kind: sports

Explanation: This game is one of shooting games. You have to kill wolves that come into the stock farm to eat livestock.

You have to kill them before wolves kill animals, otherwise you will lose.

Interface:



15.SWORD OF STORM



Kind: R P G, Action

Explanation: Kasiho has strong sword. He has 4 skills sting cut brandish and special skill.

When he clear all stage within 4 bosses

He can see her fiancée. Enemies have different kill skills and bosses are strong.

1 Level: Get away.

2 Level: Open the door.

3 Level: silent sword.

4 Level: Revenge sword.

Interface:



17.FLOWER CARD

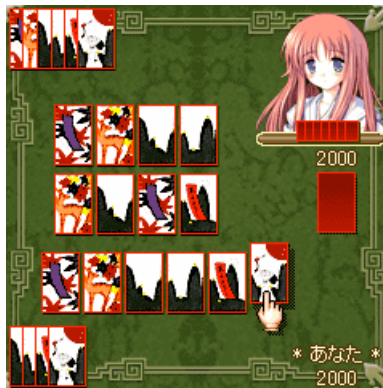


Kind: board

Explanation: In Japan Kikoi is famous.

This game is the Koikoi that can run on the mobile.

Interface:



20.RERU



Kind: Puzzel

Explanation: this game is to build the railway on the various conditions.

You can not control the train; you can only build the railway. You can not destroy rock-mountain, lake and city. You can not change program of reru that appears on the upper of screen.

Interface:

