



Foreign Languages Publishing House,
Democratic People's Republic of Korea

July 5, Juche 105(2016)

Search ☒

Address: Sochon-dong, Sosong District, Pyongyang
Tel: 850-2-18111 (Ext) 3818368 Fax: 850-2-3812100, 850-2-3814416
E-mail: flph@star-co.net.kp <http://www.naenara.com.kp>

HOME
POLITICS
ECONOMY
CULTURE

SPORTS
SCI-TECH
PUBLIC HEALTH
ENVIRONMENT

HISTORY
WOMEN
TOURISM
SOUTH KOREA

KOREA'S REUNIFICATION
OVERSEAS KOREANS
WORLD
FOREIGN RELATIONS

Economy

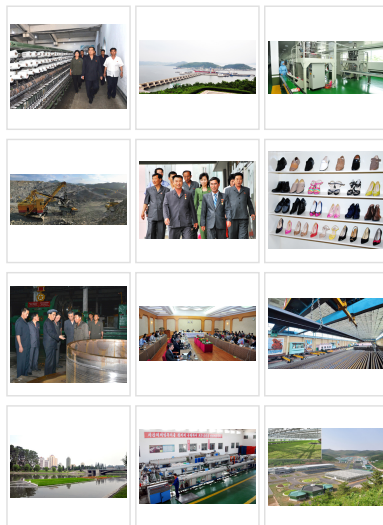
[Home](#) > [Economy](#)

New-style lifts under serial production :: [2016-07-05]

The Pyongyang Lift Factory has started serial production of lifts which are to be installed at apartment buildings on Ryomyong Street under construction.

The new-style lifts are seen to be much faster and safer in operation than the previous ones. Equipped with a smart control instrument and frequency modulator, they can carry more people at an average speed of 5 m/s. Riders will hardly feel the start and stop. The safety mechanism reliably keeps personnel and equipment from damage in case of an accidental fall. ➡

Featured Articles



Hong Kong business monopolizes tourism zone development

The Shengrun Investment Stock Co Ltd in Hong Kong, China, pushes ahead with the two projects for tourism in the Mt Paektu area and development of the Mubong International Tourism Special Zone.

The special zone covers nearly 20 square kilometres in the Mubong workers district, Samjiyon County, Ryanggang Province.

The county is home to a host of scenic attractions and revolutionary battle sites in Mt Paektu, namely Jongil Peak, Lake Samji, Rimyongsu and Mupho. Over 30 000 hectares of blueberry fields sprawl over the Mt Paektu and Mubong areas. Blueberry, a speciality of the Mt Paektu area, is the main ingredient of various drinks, sweet jelly and syrup and other food products.

The project for the international tourism special zone includes the construction of a comprehensive service network embracing hotel, restaurant, production bases and shops.

Shengrun undertakes the development project exclusively, enjoying benefits and favourable conditions guaranteed by the local law on EDZs and the rules on business management.

With the master plan for the zone development completed, it has finished the power grid project in the special zone and started infrastructure construction.

It started tourism in the Mt Paektu area on June 18.

Foreign tourists are to use a border bridge between the DPRK and China, airport in the Samjiyon area and railways.

Another promising investment destination is the Kalma area located in the Wonsan-Mt Kumgang International Tourist Zone in Kangwon Province on the coast of the East Sea of Korea.

By **Cha Myong Chol** PT

The Pyongyang Times

[Home](#) | [Politics](#) | [Economy](#) | [Culture](#) | [Sports](#) | [Sci-Tech](#) | [Public Health](#) | [Environment](#) | [History](#) | [Women](#) | [Tourism](#)
[South Korea](#) | [Korea's Reunification](#) | [Overseas Koreans](#) | [World](#) | [Foreign Relations](#)

Copyright(C) 2014 Foreign Languages Publishing House of DPR Korea, All rights reserved.